

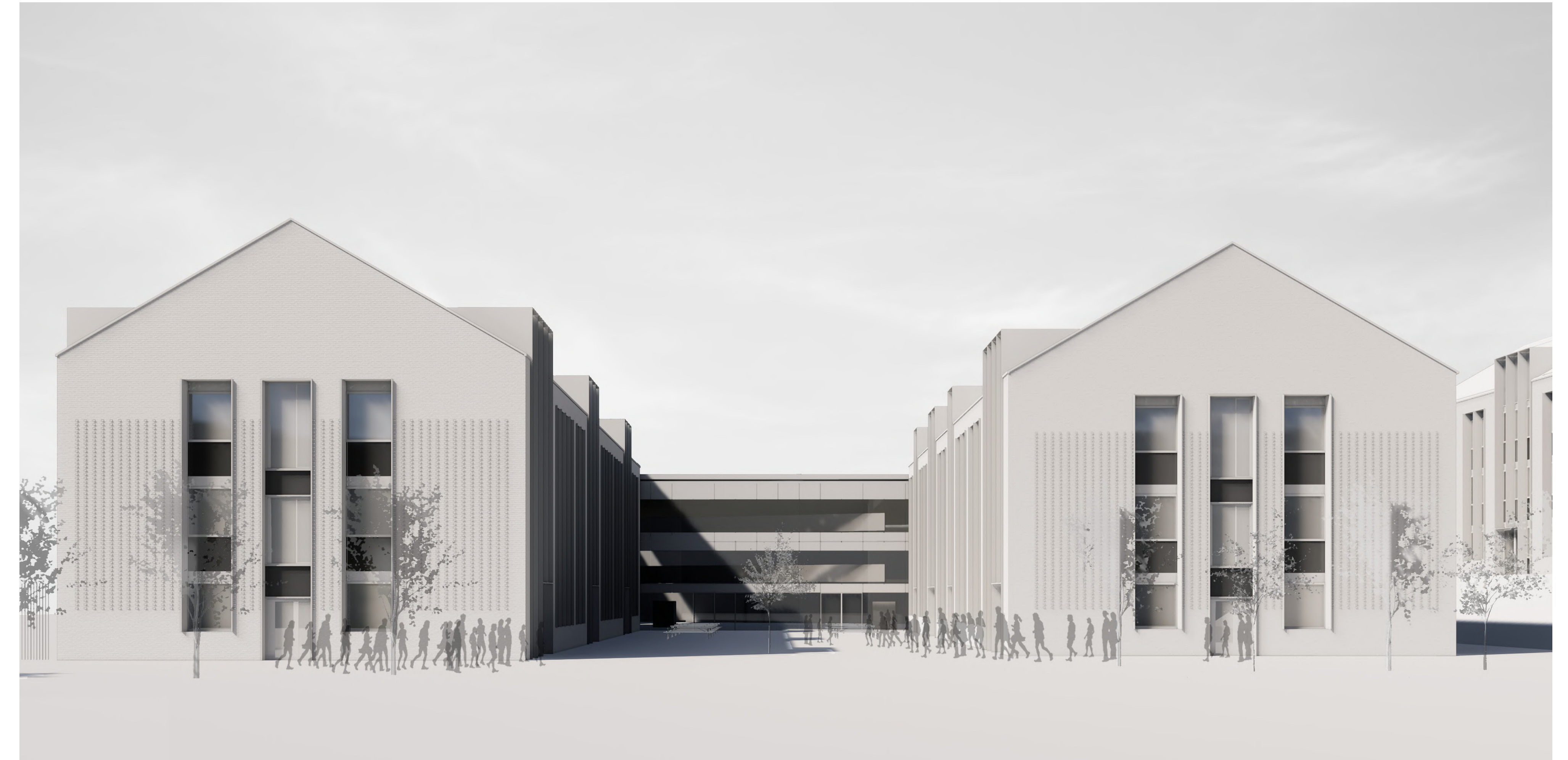
# Indicative Design



## Academic wings

The building has a linear layout with five separate wings. The various departments will be situated in the wings which are intended to reinforce identities whilst supporting cross subject interaction.

Supporting spaces (including the dining, Learning Resource Centre and hall areas) are located towards the front of the building to aid legibility and facilitate managed community uses.



## Courtyards

The spaces between the wings will be landscaped open courtyards in which learning and quieter social interaction can take place. The design encourages natural ventilation and day lighting opportunities. The shallow floor plates provide good visual connectivity between the wings and outdoor spaces.



**Kenilworth School  
& Sixth Form**

Aspiring to excellence