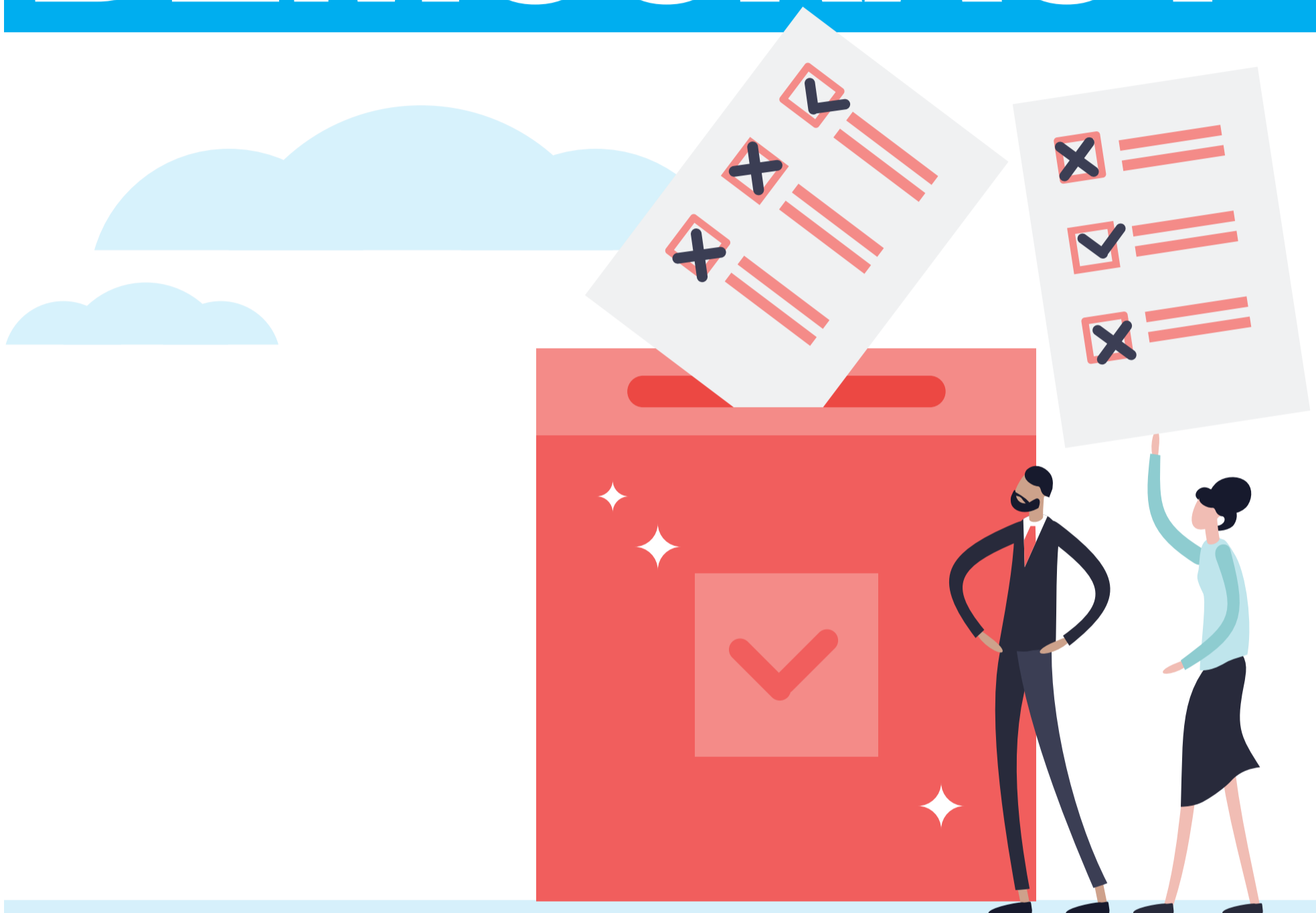


# DEMOCRACY



- Democracy is a fundamental concept and topic area in the study of Politics.
- Democracy in Britain developed slowly over a long period of time with universal suffrage not being delivered until 1928.
- British parliamentary democracy is a form of **representative democracy**, organised along the principles of the **trustee model** as outlined by Edmund Burke.
- There are also examples of **direct democracy** in the UK, such as the use of referendums.
- Students of politics are also interested in the internal democracy of organisations such as political parties and pressure groups.
- Students of politics compare the democracy in the UK with that practised in other countries, such as the USA, as well as considering attitudes to democracy in a number of political ideologies.